

Prepared For:



FIGURE 8.5-7a

Fifteen Mile Stream Gold Project CEA: Access to Crown Land within the Mi'kmaq of Nova Scotia RAA

Nova Scotia, Canada

- Crown Land
- Project Area
- Mi'kmaq Regional Assessment Area

Note: Forestry operations occur throughout the RAA and are not displayed on this figure



Coordinate System: NAD 1983 CSRS UTM Zone 20N
Projection: Transverse Mercator
Datum: North American 1983 CSRS
Units: Meter



0 10 20 40 km

1:760,000

Scale when printed @ 11" x 17"

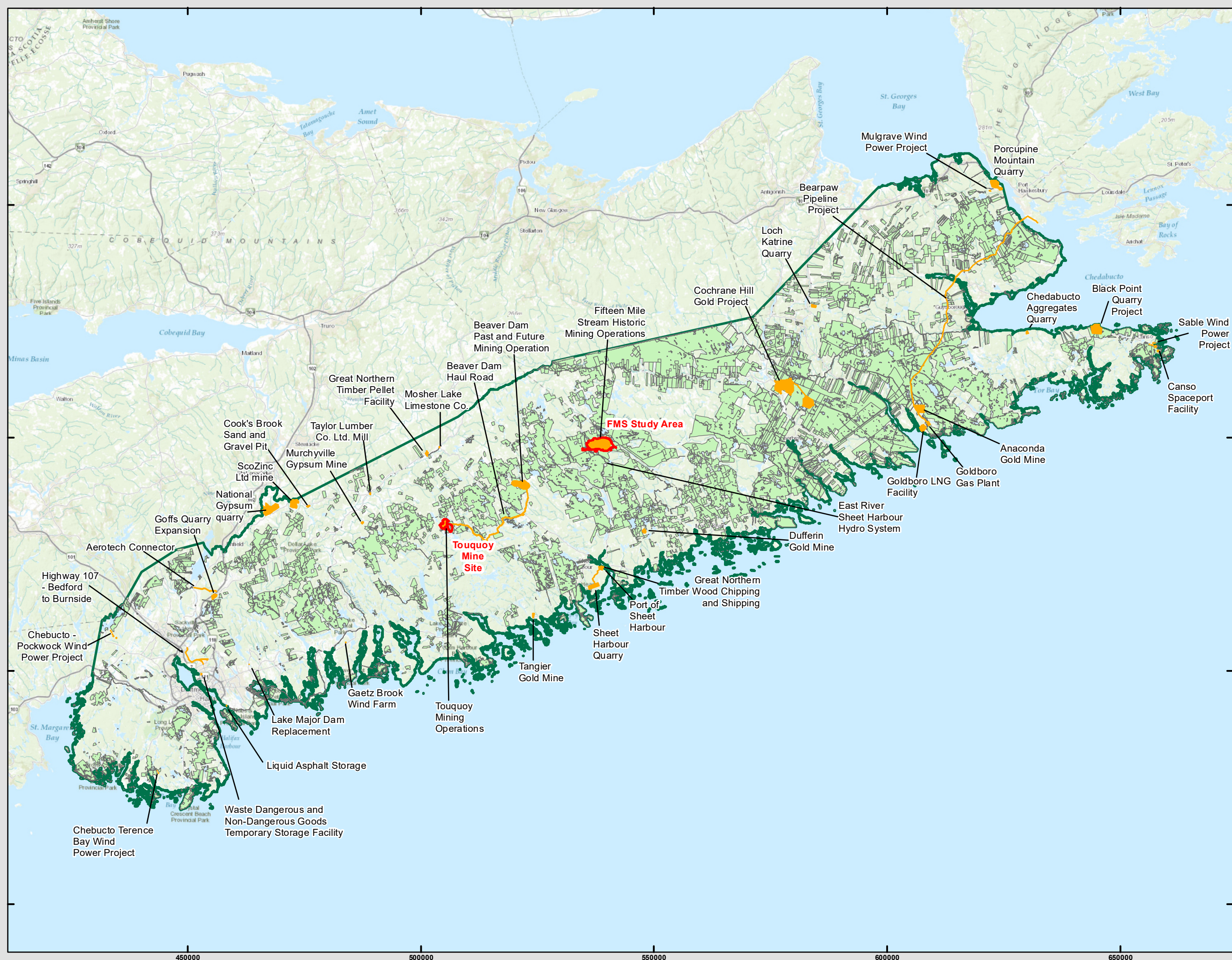
Drawn By: AS

Date: 2020-10-30

Service Layer Credits: Sources: Esri, HERE, Garmin, USGS, Intermap, INCREMENT P, NRCan, Esri Japan, METI, Esri China (Hong Kong), Esri Korea, Esri (Thailand), NGCC, (c) OpenStreetMap contributors, and the GIS User Community



McCallum Environmental Ltd.



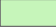


Prepared For:



FIGURE 8.5-7b

**Fifteen Mile Stream Gold Project CEA:
Access to Crown Land
within the
Mi'kmaq Regional
Assessment Area
Western**

Nova Scotia, Canada

-  Crown Land
-  Projects Evaluated in the Cumulative Effects Assessment
-  Mi'kmaq Regional Assessment Area

Note: Forestry operations occur throughout the RAA and are not displayed on this figure



Coordinate System: NAD 1983 CSRS UTM Zone 20N
Projection: Transverse Mercator
Datum: North American 1983 CSRS
Units: Meter



0 4 8 16 km

1:300,000

Scale when printed @ 11" x 17"

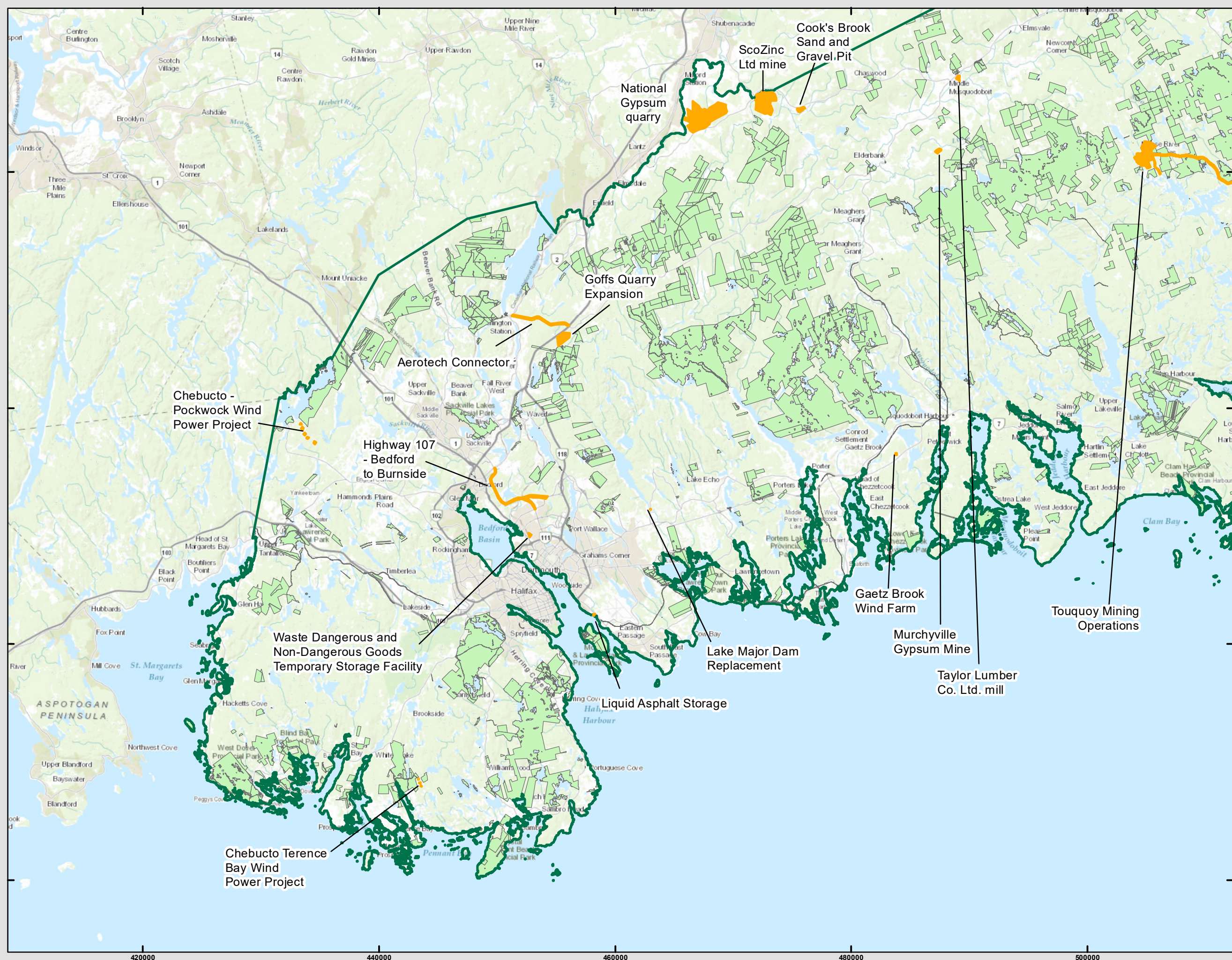
Drawn By: AS

Date: 2020-10-30

Service Layer Credits: Sources: Esri, HERE, Garmin, USGS, Intermap, INCREMENT P, NRCan, Esri Japan, METI, Esri China (Hong Kong), Esri Korea, Esri (Thailand), NGCC, (c) OpenStreetMap contributors, and the GIS User Community



McCallum Environmental Ltd.



420000 440000 460000 480000 500000

4880000
4860000
4840000
4820000

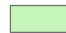


Prepared For:



FIGURE 8.5-7c

**Fifteen Mile Stream Gold Project CEA:
Access to Crown Land
within the
Mi'kmaq Regional
Assessment Area
Central**

Nova Scotia, Canada

-  Crown Land
-  Projects Evaluated in the Cumulative Effects Assessment
-  Mi'kmaq Regional Assessment Area

Note: Forestry operations occur throughout the RAA and are not displayed on this figure



Coordinate System: NAD 1983 CSRS UTM Zone 20N
Projection: Transverse Mercator
Datum: North American 1983 CSRS
Units: Meter



0 4 8 16 km

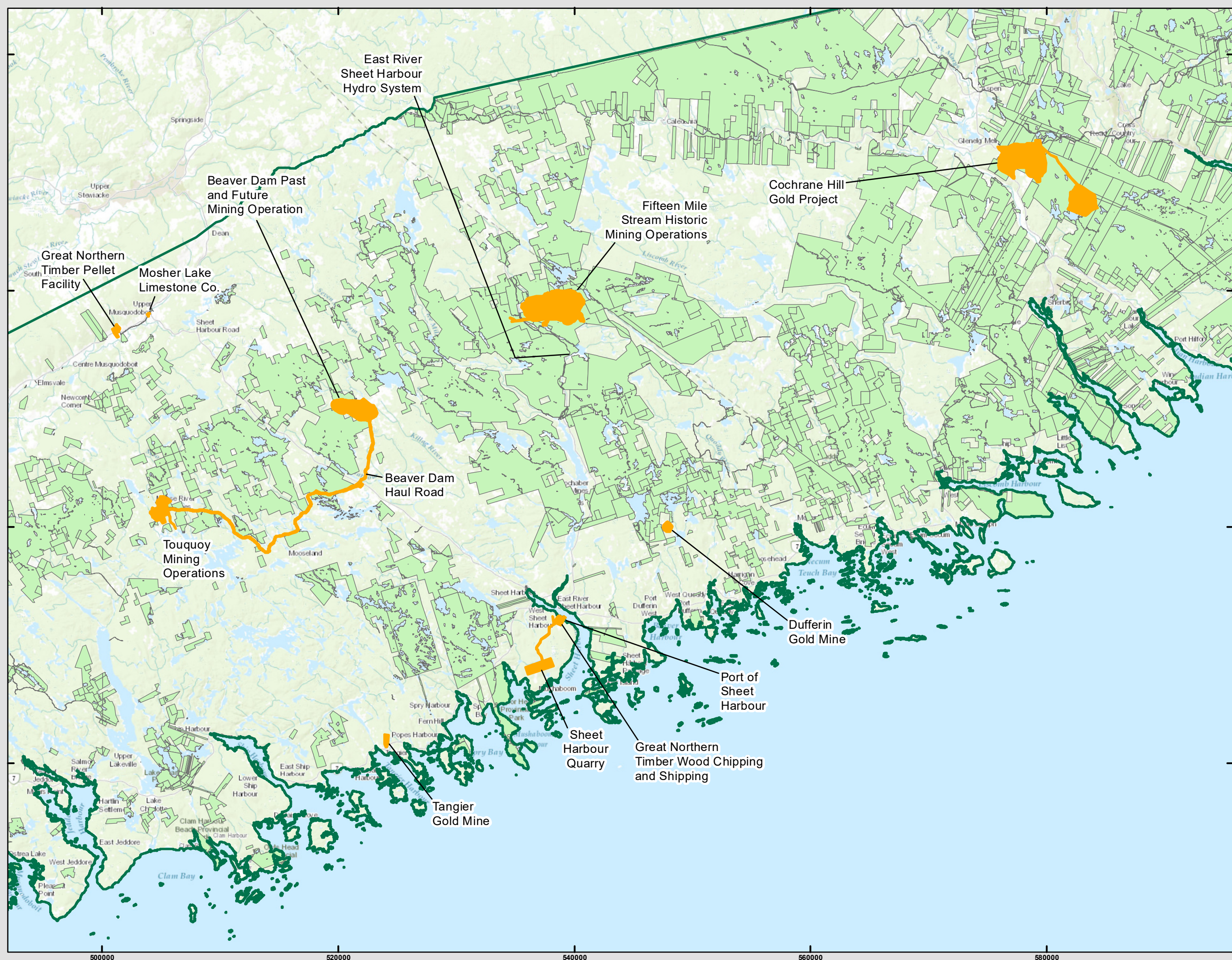
1:300,000 Scale when printed @ 11" x 17"

Drawn By: EP Date: 2019-10-02

Service Layer Credits: Sources: Esri, HERE, Garmin, Intermap, increment P Corp., GEBCO, USGS, FAO, NPS, NRCAN, GeoBase, IGN, Kadaster NL, Ordnance Survey, Esri Japan, METI, Esri China (Hong Kong), swisstopo, © OpenStreetMap



McCallum Environmental Ltd.



500000 520000 540000 560000 580000

5020000
5000000
4980000
4960000

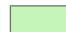


Prepared For:



FIGURE 8.5-7d

**Fifteen Mile Stream Gold Project CEA:
Access to Crown Land
within the
Mi'kmaq Regional
Assessment Area
Eastern**

Nova Scotia, Canada

-  Crown Land
-  Projects Evaluated in the Cumulative Effects Assessment
-  Mi'kmaq Regional Assessment Area

Note: Forestry operations occur throughout the RAA and are not displayed on this figure



Coordinate System: NAD 1983 CSRS UTM Zone 20N
Projection: Transverse Mercator
Datum: North American 1983 CSRS
Units: Meter



0 4 8 16 km

1:300,000 Scale when printed @ 11" x 17"

Drawn By: EP Date: 2019-10-02

Service Layer Credits: Sources: Esri, HERE, Garmin, Intermap, increment P Corp., GEBCO, USGS, FAO, NPS, NRCAN, GeoBase, IGN, Kadaster NL, Ordnance Survey, Esri Japan, METI, Esri China (Hong Kong), swisstopo, © OpenStreetMap



McCallum Environmental Ltd.

